

Farm Equipment AUCTION

Auction to be held at 1401 90th Avenue, Bode, Iowa

Live! WEDNESDAY, AUGUST 10 | 10AM ²⁰²² CDT



TRACK TRACTORS

2013 Case-IH 450 Quadtrac, Rowtrac tractor, 3,092 hrs., powershift, premium cab, LHR, integrated Pro 700 display, 5 hyd. w/power beyond, 3 pt. w/quick hitch, Lg. 1000 PTO, underslung tow cable, 18" tracks, S/N ZDF138479
2011 Case-IH 535 Quadtrac, 4,107 hrs., premium cab, powershift, LHR, 4 hyd., BB, Lg. 1000 PTO, scraper hitch, underslung tow cable, 30" tracks, S/N Z9F113430

4WD TRACTORS

1989 Case-IH 9180, shows 204 hrs., partial powershift, CAH, 4 hyd., BB, 24.5-32 clamp on duals, S/N JCB0003805
1978 International 4786, 2,813 hrs., CAH, Cummins 400 conversion kit, 10 speed, 3 hyd., BB, 24.5-32 clamp on duals, S/N 000624

2WD TRACTORS

1991 Case-IH Magnum 7120, 7,358 hrs., powershift, CAH, 3 hyd., 3 pt. no top link, 540/1000 PTO, (12) front weights, 18.4-42 rear duals, 14L-16.1 fronts, S/N JJA0031258
1989 Case-IH Magnum 7140, shows 1,777 hrs., powershift, CAH, 3 hyd., 3 pt. no top link, Lg. 1000 PTO, (12) front weights, 18.4R42 rear duals, 14L-16.1 fronts, S/N JJA0012678
1979 John Deere 2040, 2,187 hrs., open station, 8 speed gear drive, 1 hyd., 3 pt., 540 PTO, sells w/John Deere 145 loader & bucket, 16.9-24 rears, 9.5L-15 fronts, S/N 330761L

COMBINE

2014 Case-IH 8230, 2,220 sep./3,122 eng. hrs., 2WD, luxury cab, AFS Pro 700 display, Auto Guidance ready, WAAS, Field Tracker, HID lighting, PowerPlus CVT drive w/variable feed rate, standard wear rotor w/spiked bars, lateral tilt feeder w/rock trap, large wire concaves, self-leveling grain pan, HC 40' unload auger, variable motor HD planetary w/diff. lock, standard spreader, in cab controls, 620/70R42 front duals, 600/65R28 rears, S/N YEG223991
ATI, 36" tracks, fits CIH 8230 combine, S/N 02112/02101

HEAD

Case-IH 955 Cyclo, flex head, 35', full finger auger, single pt. hookups, 3" sickle, Crary air reel, S/N CBJ04119

PLANTERS

2012 Case-IH 1250 Early Riser, CCS planter, 24x30", 2 pt., tri-fold markers, hyd. drive, spring unit down pressure, pin adjust shark tooth row cleaners, CIH meters, 400 gal. liquid fertilizer tank, 1/2 width disconnect, no monitor, S/N Y8S007056

Case-IH 955 Cyclo, wing fold, 12x30", 2 pt., 1000 PTO hyd. pump, Yetter pin adjust shark tooth row cleaners, insecticide boxes

SEED TENDER

Crustbuster Speed King, tote seed tender, tandem axle, torsion suspension, 6" belt conveyor, 12V powered, S/N 16846

SELF-PROPELLED SPREADER

Tyler FLX4375, 58,497 miles, 4,413 hrs., 2WD, 5 speed automatic, New Leader L4000G4-14 dry box, MultiApplier ready, Trimble receiver, Ag Leader Integra display, New Leader 10 section controller, Chelsea PTO, 73x44.00-32 rear floaters, 54x31.00-26 front floaters, S/N 129698
New Leader MultiApplier L3220G4, SS, hyd. drive

SELF-PROPELLED SPRAYER

Case-IH SPX4260, 3,577 hrs., 90' hyd. fold boom, Ag Leader boom control system, 1,200 gal. SS tank, wheel width hyd. adjust, 380/85R46 tires, S/N JFG0004963

Ag-Chem 1903 Terra-Gator, 52,680 miles, 5,185 hrs., Cummins engine, EF 8 speed hi/lo, Ag Leader Direct Command EZ Steer, 2,000 gal. SS tank, 80' boom, single nozzle on 60" center, 60 gal. SS tank, 73x44.00-32 tires, S/N 1900022

SIDE DRESS APPLICATOR

Blue-Jet AT4610, 24x30", 23 couler, 7-section, 1,700 gal. tank, 2-section shutoff, Hypro hyd. drive pump, 420/80R46 tires, S/N 014843

TILLAGE EQUIPMENT

2012 Case-IH 870 Ecolo-Tiger, disk ripper, 9-shank x 24", 7" pts., 425/65R22.5 tires, S/N YCD060453

2007 Krause 4850-18 Dominator, disk ripper, 11-shank x 18", 2-1/2" pts. w/7" wings, shank gauge, rolling basket harrow, hyd. level adjust, tandems on main, 14L-16.1 tires, S/N 1454

International 490, disc, 22"6", 9" spacing, 3-section, tandems on main, 9.5L-14 tires, S/N 021716

International 470, disc, 21", manual fold wings, 9" spacing, 20" disc blades, 225/75R15 tires

Salford 570-30 RTS, vertical tillage, 30', 3-section, 12-shank, 30", NH3 shank (1 missing) no knives, Raven NH3 Super cooler, single hose, 3-bar coil tine harrow, tandems across, 11L-15 tires, S/N 081284ML

Hiniker 1000, row crop cultivator, 12x30", 3 pt., 21" sweeps, gauge wheels, stabilizers, S/N 1000-0977-100

International 181, rotary hoe, 30', flat fold, 3 pt., gauge wheels, S/N JAG0580227

Case-IH 1830 Vibra Shank, row crop cultivator, 16x30", flat fold, 3 pt., gauge wheels, S/N JAG053112

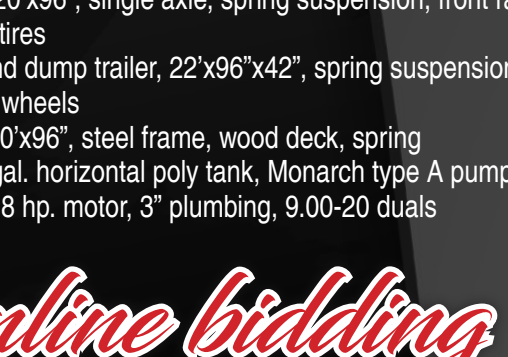
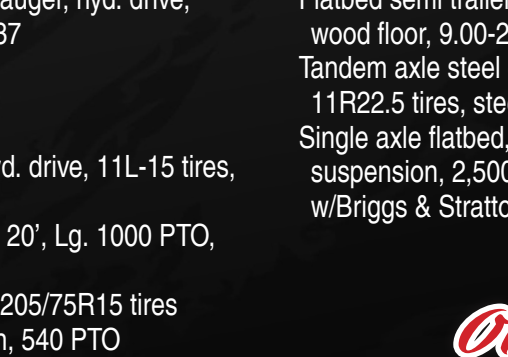
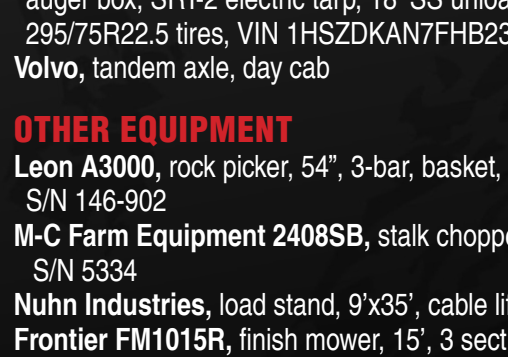
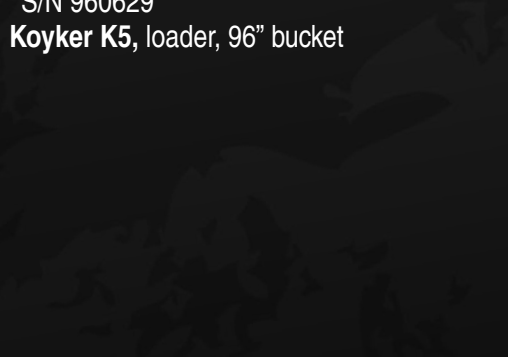
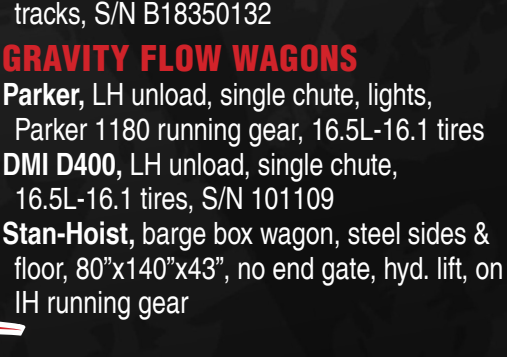
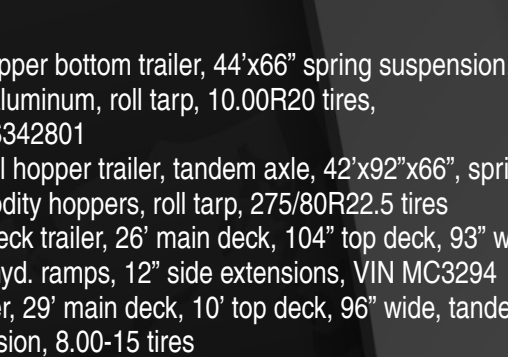
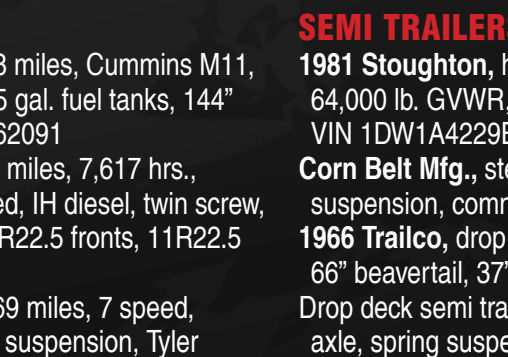
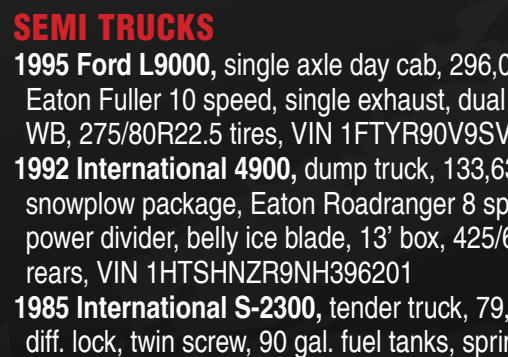
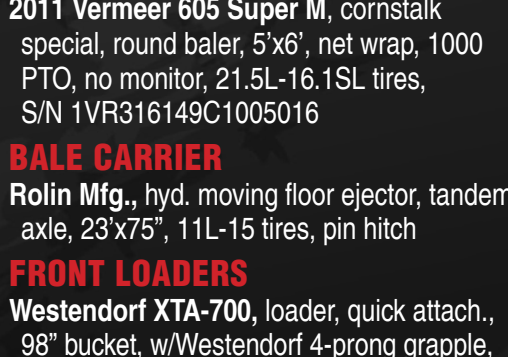
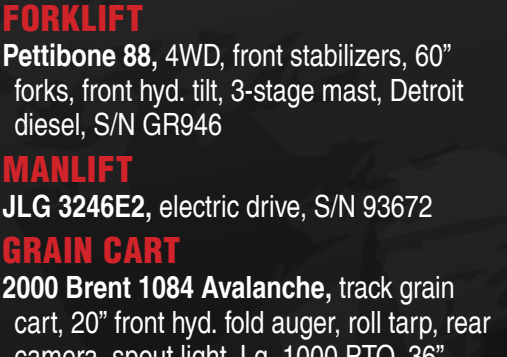
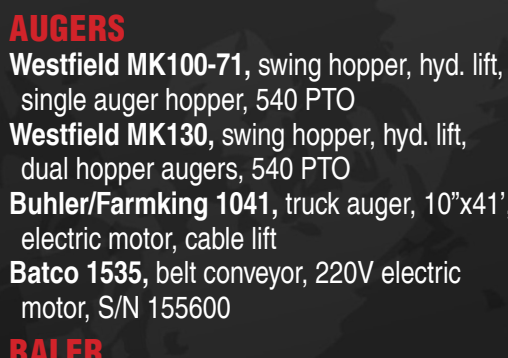
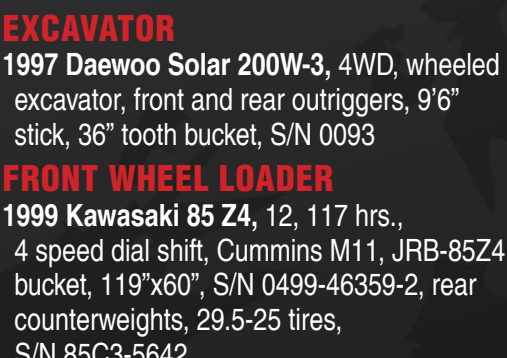
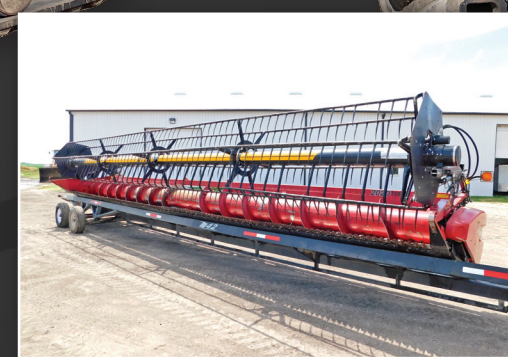
International 800, plow, 9x18", S/N 006022

McFarlane, harrow, 60', 3-section

(2) International 4300, field cultivators, 52', 6" spacing, walking tandems across, 7-1/2" sweeps, 3-bar spring tine harrow, 11L-15 tires

DOZER

1993 Caterpillar D4H LGP Series 3, 3,454 hrs., 10', 6-way blade, 22" tracks, S/N 8PJ00215



Harlan Weydent
 For information contact Tracy Coffland of Steffes Group, 319.385.2000 or 319.350.5003

319.385.2000 | SteffesGroup.com
 Steffes Group, Inc., 2245 East Bluegrass Road, Mt. Pleasant, IA 52641



TERMS: All items sold as is where is. Payment of cash or check must be made sale day before removal of items. Statements made auction day take precedence over all advertising. \$35 documentation fee applies to all titled vehicles. Titles will be mailed. Canadian buyers need a bank letter or credit to facilitate border transfer.

online bidding available!

